

RoHS TEST REPORT

Report No. : B-R190422770

Date: Apr.18,2019

Page 1 of 13

Applicant : WING CHUN PLASTIC MANUFACTURE (SHENZHEN) CO.,LTD.

Address : BUILDING NO18.5TH,CITIANPU INDUSTRIAL AREA,GONGMING STREET,GUANGMING
NEW DISTICT,SHENZHEN,CHINA

Client No : 07556104

Manufacturer : Same As Holder

Report on the submitted sample said to be

Sample Name : Vibration Battery Floss Toothbrush

Model No : A037

Sample model : A037

Sample Received Date : Apr.09,2019

Complete Date : Apr.18,2019



Test Requested : As specified by client, to determine the Cadmium, Lead, Mercury, Hexavalent Chromium, PBBs / PBDEs, Bis-(2-ethylhexyl) Phthalate (DEHP), Diisobutyl phthalate(DIBP), Dibutyl Phthalate (DBP) & Benzylbutyl Phthalate (BBP) content in the submitted sample.

Test Result(s) : Conform to RoHS Directive 2011/65/EU annex II amending annex (EU)2015/863



Company No. 07113834

*****FOR FURTHER DETAILS, PLEASE REFER TO THE FOLLOWING PAGE(S)*****

Written by: Shen Xiao
(Shen xiao)

Inspected by: Austin Zhong
(Austin Zhong)

Approved by: Martin Wang
(Martin Wang)



This report is considered invalidated without the Special Seal for Inspection of the Beide (Shenzhen) Product Service Limited, This report shall not be altered, increased or deleted. The results shown in this test report refer only to the sample(s) tested. Without written approval of Beide (Shenzhen) Product Service Limited, this test report shall not be copied except in full and published as advertisement.

RoHS TEST REPORT

Report No. : B-R190422770

Date: Apr.18,2019

Page 2 of 13

Test Method: With reference to IEC 62321

- (1) Determination of Cadmium by ICP-OES.
- (2) Determination of Lead by ICP-OES.
- (3) Determination of Mercury by ICP-OES.
- (4) Determination of Hexavalent Chromium by Colorimetric Method using UV-Vis.
- (5) Determination of PBBs / PBDEs content by GC-MS.
- (6) Determination of phthalates by GC-MS.

Test Result(s):

Test item	Unit	Limit	Result			
			Hard rubber handle	Handle rubber	Upper shell	Bottom cover
Cadmium (Cd).	mg/kg	100	N.D.	N.D.	N.D.	N.D.
Lead (Pb).	mg/kg	1000	N.D.	N.D.	N.D.	N.D.
Mercury (Hg).	mg/kg	1000	N.D.	2.6344	N.D.	N.D.
Hexavalent Chromium (Cr VI).	mg/kg	1000	8.3817	N.D.	N.D.	N.D.
Polybrominated Biphenyls (PBBs)	mg/kg	1000	N.D.	N.D.	N.D.	N.D.
Monobromobiphenyl	mg/kg	/	N.D.	N.D.	N.D.	N.D.
Dibromobiphenyl	mg/kg	/	N.D.	N.D.	N.D.	N.D.
Tribromobiphenyl	mg/kg	/	N.D.	N.D.	N.D.	N.D.
Tetrabromobiphenyl	mg/kg	/	N.D.	N.D.	N.D.	N.D.
Pentabromobiphenyl	mg/kg	/	N.D.	N.D.	N.D.	N.D.
Hexabromobiphenyl	mg/kg	/	N.D.	N.D.	N.D.	N.D.
Heptabromobiphenyl	mg/kg	/	N.D.	N.D.	N.D.	N.D.
Octabromobiphenyl	mg/kg	/	N.D.	N.D.	N.D.	N.D.

This report is considered invalidated without the Special Seal for Inspection of the Beide (Shenzhen) Product Service Limited, This report shall not be altered, increased or deleted. The results shown in this test report refer only to the sample(s) tested. Without written approval of Beide (Shenzhen) Product Service Limited, this test report shall not be copied except in full and published as advertisement.

RoHS TEST REPORT

Report No. : B-R190422770

Date: Apr.18,2019

Page 3 of 13

Test item	Unit	Limit	Result			
			Hard rubber handle	Handle rubber	Upper shell	Bottom cover
Nonabromobiphenyl	mg/kg	/	N.D.	N.D.	N.D.	N.D.
Decabromobiphenyl	mg/kg	/	N.D.	N.D.	N.D.	N.D.
Polybrominated Diphenyl Ethers (PBDEs)	mg/kg	1000	N.D.	N.D.	N.D.	N.D.
Monobromodiphenyl Ether	mg/kg	/	N.D.	N.D.	N.D.	N.D.
Dibromodiphenyl Ether	mg/kg	/	N.D.	N.D.	N.D.	N.D.
Tribromodiphenyl Ether	mg/kg	/	N.D.	N.D.	N.D.	N.D.
Tetrabromodiphenyl Ether	mg/kg	/	N.D.	N.D.	N.D.	N.D.
Pentabromodiphenyl Ether	mg/kg	/	N.D.	N.D.	N.D.	N.D.
Hexabromodiphenyl Ether	mg/kg	/	N.D.	N.D.	N.D.	N.D.
Heptabromodiphenyl Ether	mg/kg	/	N.D.	N.D.	N.D.	N.D.
Octabromodiphenyl Ether	mg/kg	/	N.D.	N.D.	N.D.	N.D.
Nonabromodiphenyl Ether	mg/kg	/	N.D.	N.D.	N.D.	N.D.
Decabromodiphenyl Ether	mg/kg	/	N.D.	N.D.	N.D.	N.D.
Diisobutyl phthalate(DIBP)	mg/kg	1000	N.D.	N.D.	N.D.	N.D.
Dibutyl Phthalate (DBP)	%(w/w)	1000	N.D.	N.D.	N.D.	N.D.
Benzylbutyl Phthalate (BBP)	%(w/w)	1000	N.D.	N.D.	N.D.	N.D.
Bis-(2-ethylhexyl) Phthalate (DEHP)	%(w/w)	1000	N.D.	N.D.	N.D.	N.D.

This report is considered invalidated without the Special Seal for Inspection of the Beide (Shenzhen) Product Service Limited, This report shall not be altered, increased or deleted. The results shown in this test report refer only to the sample(s) tested. Without written approval of Beide (Shenzhen) Product Service Limited, this test report shall not be copied except in full and published as advertisement.

RoHS TEST REPORT

Report No. : B-R190422770

Date: Apr.18,2019

Page 4 of 13

Test item	Unit	Limit	Result			
			Head	Bracket	Single bundle brush head	Decoration ring
Cadmium (Cd).	mg/kg	100	N.D.	N.D.	N.D.	39.2693
Lead (Pb).	mg/kg	1000	N.D.	3.2211	N.D.	N.D.
Mercury (Hg).	mg/kg	1000	N.D.	N.D.	2.8855	3.108
Hexavalent Chromium (Cr VI).	mg/kg	1000	3.8221	N.D.	N.D.	N.D.
Polybrominated Biphenyls (PBBs)	mg/kg	1000	N.D.	N.D.	N.D.	N.D.
Monobromobiphenyl	mg/kg	/	N.D.	N.D.	N.D.	N.D.
Dibromobiphenyl	mg/kg	/	N.D.	N.D.	N.D.	N.D.
Tribromobiphenyl	mg/kg	/	N.D.	N.D.	N.D.	N.D.
Tetrabromobiphenyl	mg/kg	/	N.D.	N.D.	N.D.	N.D.
Pentabromobiphenyl	mg/kg	/	N.D.	N.D.	N.D.	N.D.
Hexabromobiphenyl	mg/kg	/	N.D.	N.D.	N.D.	N.D.
Heptabromobiphenyl	mg/kg	/	N.D.	N.D.	N.D.	N.D.
Octabromobiphenyl	mg/kg	/	N.D.	N.D.	N.D.	N.D.
Nonabromobiphenyl	mg/kg	/	N.D.	N.D.	N.D.	N.D.
Decabromobiphenyl	mg/kg	/	N.D.	N.D.	N.D.	N.D.
Polybrominated Diphenyl Ethers (PBDEs)	mg/kg	1000	N.D.	N.D.	N.D.	N.D.

This report is considered invalidated without the Special Seal for Inspection of the Beide (Shenzhen) Product Service Limited, This report shall not be altered, increased or deleted. The results shown in this test report refer only to the sample(s) tested. Without written approval of Beide (Shenzhen) Product Service Limited, this test report shall not be copied except in full and published as advertisement.

RoHS TEST REPORT

Report No. : B-R190422770

Date: Apr.18,2019

Page 5 of 13

Test item	Unit	Limit	Result			
			Head	Bracket	Single bundle brush head	Decoration ring
Monobromodiphenyl Ether	mg/kg	/	N.D.	N.D.	N.D.	N.D.
Dibromodiphenyl Ether	mg/kg	/	N.D.	N.D.	N.D.	N.D.
Tribromodiphenyl Ether	mg/kg	/	N.D.	N.D.	N.D.	N.D.
Tetrabromodiphenyl Ether	mg/kg	/	N.D.	N.D.	N.D.	N.D.
Pentabromodiphenyl Ether	mg/kg	/	N.D.	N.D.	N.D.	N.D.
Hexabromodiphenyl Ether	mg/kg	/	N.D.	N.D.	N.D.	N.D.
Heptabromodiphenyl Ether	mg/kg	/	N.D.	N.D.	N.D.	N.D.
Octabromodiphenyl Ether	mg/kg	/	N.D.	N.D.	N.D.	N.D.
Nonabromodiphenyl Ether	mg/kg	/	N.D.	N.D.	N.D.	N.D.
Decabromodiphenyl Ether	mg/kg	/	N.D.	N.D.	N.D.	N.D.
Diisobutyl phthalate(DIBP)	mg/kg	1000	N.D.	N.D.	N.D.	N.D.
Dibutyl Phthalate (DBP)	%(w/w)	1000	N.D.	N.D.	N.D.	N.D.
Benzylbutyl Phthalate (BBP)	%(w/w)	1000	N.D.	N.D.	N.D.	N.D.
Bis-(2-ethylhexyl) Phthalate (DEHP)	%(w/w)	1000	N.D.	N.D.	N.D.	N.D.

This report is considered invalidated without the Special Seal for Inspection of the Beide (Shenzhen) Product Service Limited, This report shall not be altered, increased or deleted. The results shown in this test report refer only to the sample(s) tested. Without written approval of Beide (Shenzhen) Product Service Limited, this test report shall not be copied except in full and published as advertisement.

RoHS TEST REPORT

Report No. : B-R190422770

Date: Apr.18,2019

Page 6 of 13

Test item	Unit	Limit	Result			
			Positive spring	Negative pole spring	Connecting piece	PCB
Cadmium (Cd).	mg/kg	100	N.D.	N.D.	N.D.	N.D.
Lead (Pb).	mg/kg	1000	N.D.	N.D.	N.D.	N.D.
Mercury (Hg).	mg/kg	1000	N.D.	N.D.	N.D.	N.D.
Hexavalent Chromium (Cr VI).	mg/kg	1000	599.0122	405.5004	N.D.	22.0374
Polybrominated Biphenyls (PBBs)	mg/kg	1000	N.D.	N.D.	N.D.	N.D.
Monobromobiphenyl	mg/kg	/	N.D.	N.D.	N.D.	N.D.
Dibromobiphenyl	mg/kg	/	N.D.	N.D.	N.D.	N.D.
Tribromobiphenyl	mg/kg	/	N.D.	N.D.	N.D.	N.D.
Tetrabromobiphenyl	mg/kg	/	N.D.	N.D.	N.D.	N.D.
Pentabromobiphenyl	mg/kg	/	N.D.	N.D.	N.D.	N.D.
Hexabromobiphenyl	mg/kg	/	N.D.	N.D.	N.D.	N.D.
Heptabromobiphenyl	mg/kg	/	N.D.	N.D.	N.D.	N.D.
Octabromobiphenyl	mg/kg	/	N.D.	N.D.	N.D.	N.D.
Nonabromobiphenyl	mg/kg	/	N.D.	N.D.	N.D.	N.D.
Decabromobiphenyl	mg/kg	/	N.D.	N.D.	N.D.	N.D.
Polybrominated Diphenyl Ethers (PBDEs)	mg/kg	1000	N.D.	N.D.	N.D.	N.D.

This report is considered invalidated without the Special Seal for Inspection of the Beide (Shenzhen) Product Service Limited, This report shall not be altered, increased or deleted. The results shown in this test report refer only to the sample(s) tested. Without written approval of Beide (Shenzhen) Product Service Limited, this test report shall not be copied except in full and published as advertisement.

RoHS TEST REPORT

Report No. : B-R190422770

Date: Apr.18,2019

Page 7 of 13

Test item	Unit	Limit	Result			
			Positive spring	Negative pole spring	Connecting piece	PCB
Monobromodiphenyl Ether	mg/kg	/	N.D.	N.D.	N.D.	N.D.
Dibromodiphenyl Ether	mg/kg	/	N.D.	N.D.	N.D.	N.D.
Tribromodiphenyl Ether	mg/kg	/	N.D.	N.D.	N.D.	N.D.
Tetrabromodiphenyl Ether	mg/kg	/	N.D.	N.D.	N.D.	N.D.
Pentabromodiphenyl Ether	mg/kg	/	N.D.	N.D.	N.D.	N.D.
Hexabromodiphenyl Ether	mg/kg	/	N.D.	N.D.	N.D.	N.D.
Heptabromodiphenyl Ether	mg/kg	/	N.D.	N.D.	N.D.	N.D.
Octabromodiphenyl Ether	mg/kg	/	N.D.	N.D.	N.D.	N.D.
Nonabromodiphenyl Ether	mg/kg	/	N.D.	N.D.	N.D.	N.D.
Decabromodiphenyl Ether	mg/kg	/	N.D.	N.D.	N.D.	N.D.
Diisobutyl phthalate(DIBP)	mg/kg	1000	N/A	N/A	N/A	N.D.
Dibutyl Phthalate (DBP)	%(w/w)	1000	N/A	N/A	N/A	N.D.
Benzylbutyl Phthalate (BBP)	%(w/w)	1000	N/A	N/A	N/A	N.D.
Bis-(2-ethylhexyl) Phthalate (DEHP)	%(w/w)	1000	N/A	N/A	N/A	N.D.

This report is considered invalidated without the Special Seal for Inspection of the Beide (Shenzhen) Product Service Limited, This report shall not be altered, increased or deleted. The results shown in this test report refer only to the sample(s) tested. Without written approval of Beide (Shenzhen) Product Service Limited, this test report shall not be copied except in full and published as advertisement.

RoHS TEST REPORT

Report No. : B-R190422770

Date: Apr.18,2019

Page 8 of 13

Test item	Unit	Limit	Result	
			Seal ring	Switch
Cadmium (Cd).	mg/kg	100	8.6456	N.D.
Lead (Pb).	mg/kg	1000	N.D.	N.D.
Mercury (Hg).	mg/kg	1000	N.D.	N.D.
Hexavalent Chromium (Cr VI).	mg/kg	1000	N.D.	N.D.
Polybrominated Biphenyls (PBBs)	mg/kg	1000	N.D.	N.D.
Monobromobiphenyl	mg/kg	/	N.D.	N.D.
Dibromobiphenyl	mg/kg	/	N.D.	N.D.
Tribromobiphenyl	mg/kg	/	N.D.	N.D.
Tetrabromobiphenyl	mg/kg	/	N.D.	N.D.
Pentabromobiphenyl	mg/kg	/	N.D.	N.D.
Hexabromobiphenyl	mg/kg	/	N.D.	N.D.
Heptabromobiphenyl	mg/kg	/	N.D.	N.D.
Octabromobiphenyl	mg/kg	/	N.D.	N.D.
Nonabromobiphenyl	mg/kg	/	N.D.	N.D.
Decabromobiphenyl	mg/kg	/	N.D.	N.D.
Polybrominated Diphenyl Ethers (PBDEs)	mg/kg	1000	N.D.	N.D.

This report is considered invalidated without the Special Seal for Inspection of the Beide (Shenzhen) Product Service Limited, This report shall not be altered, increased or deleted. The results shown in this test report refer only to the sample(s) tested. Without written approval of Beide (Shenzhen) Product Service Limited, this test report shall not be copied except in full and published as advertisement.

RoHS TEST REPORT

Report No. : B-R190422770

Date: Apr.18,2019

Page 9 of 13

Test item	Unit	Limit	Result	
			Seal ring	Switch
Monobromodiphenyl Ether	mg/kg	/	N.D.	N.D.
Dibromodiphenyl Ether	mg/kg	/	N.D.	N.D.
Tribromodiphenyl Ether	mg/kg	/	N.D.	N.D.
Tetrabromodiphenyl Ether	mg/kg	/	N.D.	N.D.
Pentabromodiphenyl Ether	mg/kg	/	N.D.	N.D.
Hexabromodiphenyl Ether	mg/kg	/	N.D.	N.D.
Heptabromodiphenyl Ether	mg/kg	/	N.D.	N.D.
Octabromodiphenyl Ether	mg/kg	/	N.D.	N.D.
Nonabromodiphenyl Ether	mg/kg	/	N.D.	N.D.
Decabromodiphenyl Ether	mg/kg	/	N.D.	N.D.
Diisobutyl phthalate(DIBP)	mg/kg	1000	N.D.	N.D.
Dibutyl Phthalate (DBP)	%(w/w)	1000	N.D.	N.D.
Benzylbutyl Phthalate (BBP)	%(w/w)	1000	N.D.	N.D.
Bis-(2-ethylhexyl) Phthalate (DEHP)	%(w/w)	1000	N.D.	N.D.

This report is considered invalidated without the Special Seal for Inspection of the Beide (Shenzhen) Product Service Limited, This report shall not be altered, increased or deleted. The results shown in this test report refer only to the sample(s) tested. Without written approval of Beide (Shenzhen) Product Service Limited, this test report shall not be copied except in full and published as advertisement.

RoHS TEST REPORT

Report No. : B-R190422770

Date: Apr.18,2019

Page 10 of 13

Note:

1. mg/kg = milligram per kilogram = ppm
2. N.D. = Not Detected (<MDL)
3. N/A = Not Applicable
4. MDL = Method detection limit



This report is considered invalidated without the Special Seal for Inspection of the Beide (Shenzhen) Product Service Limited, This report shall not be altered, increased or deleted. The results shown in this test report refer only to the sample(s) tested. Without written approval of Beide (Shenzhen) Product Service Limited, this test report shall not be copied except in full and published as advertisement.

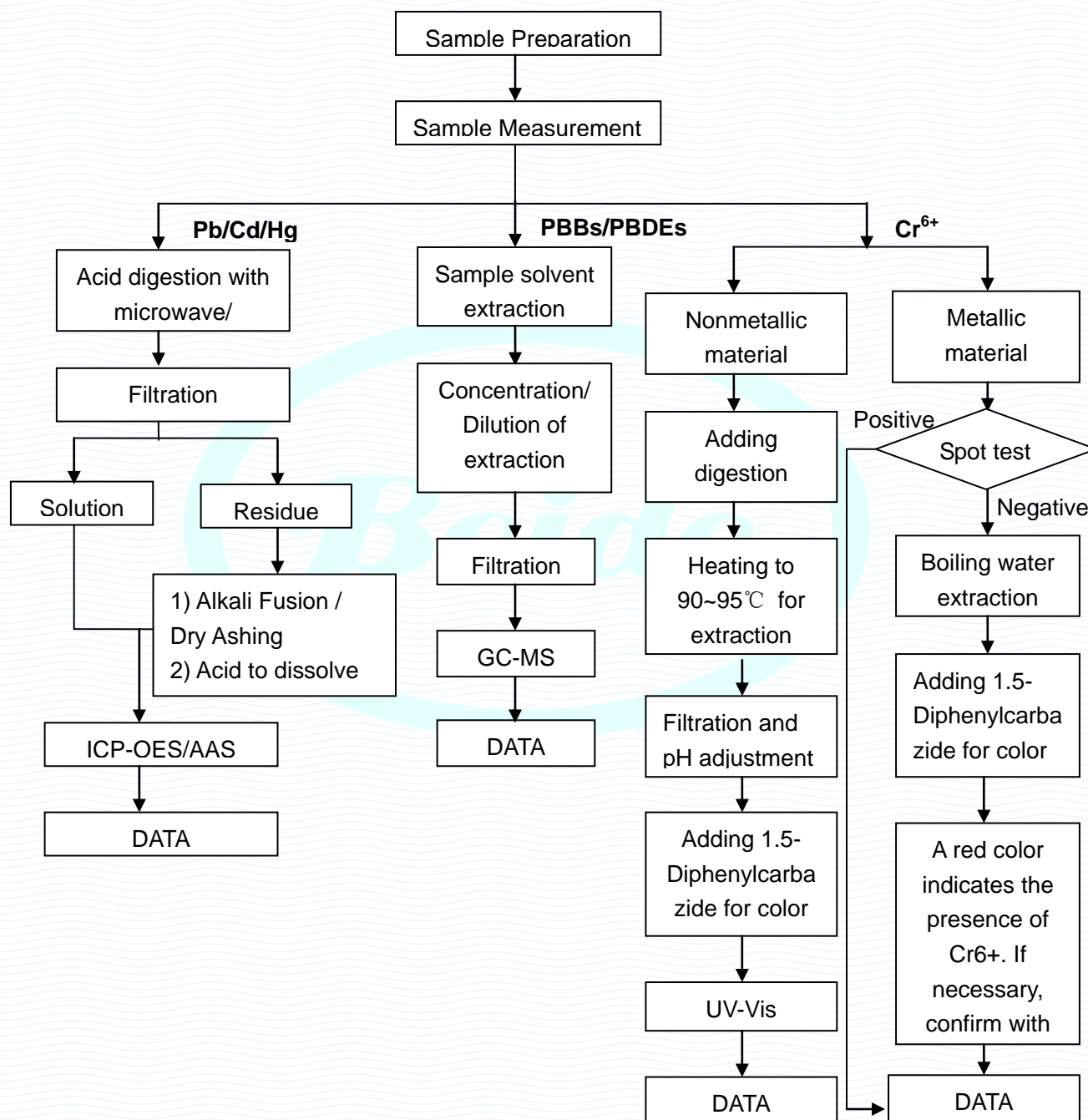
RoHS TEST REPORT

Report No. : B-R190422770

Date: Apr.18,2019

Page 11 of 13

RoHS Testing Flow Chart



This report is considered invalidated without the Special Seal for Inspection of the Beide (Shenzhen) Product Service Limited, This report shall not be altered, increased or deleted. The results shown in this test report refer only to the sample(s) tested. Without written approval of Beide (Shenzhen) Product Service Limited, this test report shall not be copied except in full and published as advertisement.

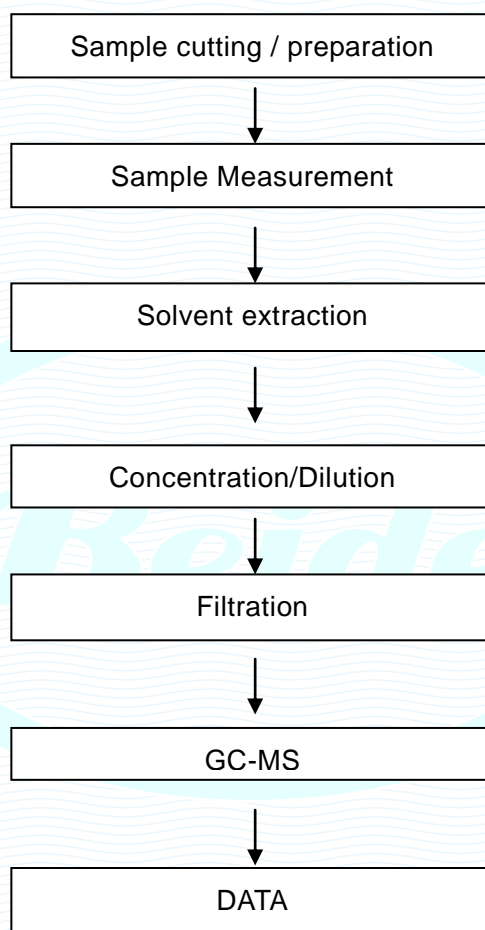
RoHS TEST REPORT

Report No. : B-R190422770

Date: Apr.18,2019

Page 12 of 13

Phthalates Testing Flow Chart



This report is considered invalidated without the Special Seal for Inspection of the Beide (Shenzhen) Product Service Limited, This report shall not be altered, increased or deleted. The results shown in this test report refer only to the sample(s) tested. Without written approval of Beide (Shenzhen) Product Service Limited, this test report shall not be copied except in full and published as advertisement.

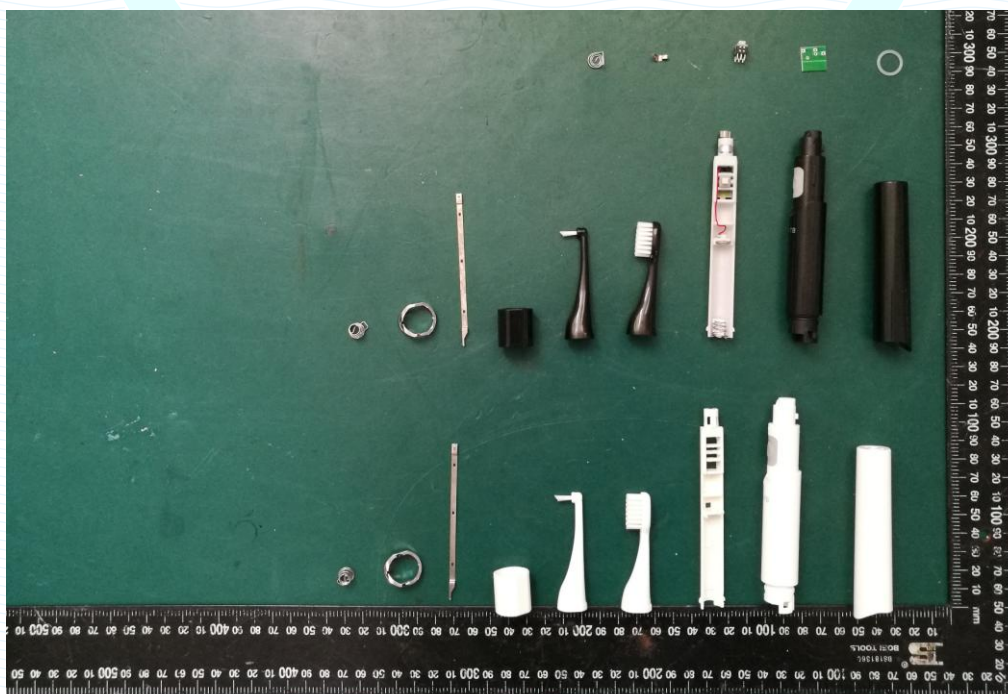
RoHS TEST REPORT

Report No. : B-R190422770

Date: Apr.18,2019

Page 13 of 13

Photographs of Sample



End of Report

This report is considered invalidated without the Special Seal for Inspection of the Beide (Shenzhen) Product Service Limited, This report shall not be altered, increased or deleted. The results shown in this test report refer only to the sample(s) tested. Without written approval of Beide (Shenzhen) Product Service Limited, this test report shall not be copied except in full and published as advertisement.